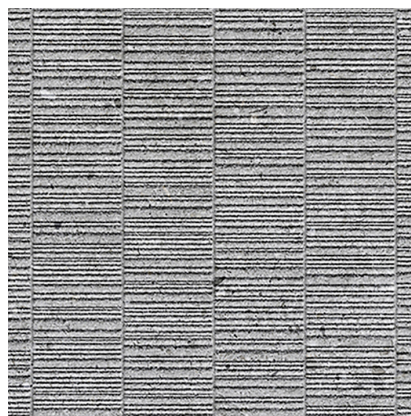


Model: STRIPE MATIKA ACERO 31,6X90(A)

Codes: 100299462

Water absorption: BIII - Revestimiento ($10\% \leq E \leq 20\%$)



DIMENSIONAL FEATURES

UNE-EN ISO 10545-2

| | | |
|-----------------------------|-------------|----------|
| Thickness | 10.5 MM | +/-5%* |
| Width | 316 MM | |
| Length | 900 MM | |
| Length and width deviation | Below 0.15% | +/-0.3%* |
| Side straightness deviation | Below 0.15% | +/-0.3%* |
| Squareness deviation | Below 0.15% | +/-0.3%* |
| Surface flatness deviation | Below 0.15% | +/-0.4%* |

*ISO-13006:2018 UNE-EN 14411:2016

MECHANICAL FEATURES

UNE-EN ISO 10545-4-6-7-11

| | | |
|--------------------|------------------|------------|
| Breaking strength | >1100 N | >600N* |
| Modulus of rupture | >23 N/MM2 | >=12N/mm2* |
| Crazing resistance | Resists 3 cycles | |

*ISO-13006:2018 UNE-EN 14411:2016

HYGIENIC FEATURES

UNE-EN ISO 10545-13-14:1995

| | | |
|---------------------|--|---------|
| Chemical resistance | Class "A" for swimming pools and cleaning products (resists attack). Minimum Class "B" for acids and bases | B Min.* |
| Stain resistance | Class 5. Easy cleaning with water | 3 Min.* |

*ISO-13006:2018 UNE-EN 14411:2016

SCOPE OF USE

| | | |
|------------------|--------------|--|
| Technical code-1 | Use on walls | |
|------------------|--------------|--|

PACKING

| | | |
|------------------------|-------------------|--|
| Sales units per box | 1.137592 M2/BOX | |
| Sales units per pallet | 58.017178 M2/PAL | |
| Sales units per unit | 0.284398 M2/PIECE | |

System Certification



Do not use cleaning agents containing hydrofluoric acid.

It is recommended to fix tiles with a minimum joint of 1,5 mm. Do not fix without joint.

For big sizes, it is recommended to fix with mortars containing polymeric additives and to use the double gluing technique.

Mosaic tiles must be grouted.

This document is only commercial and cannot be used as expert opinion, documentary evidence or in any legal or administrative procedure unless authorized by PORCELANOSA S.A.